



All about Cranfield

Sandra Silva
International Development Manager, Europe

November 2022





**Cranfield is
creating leaders in
engineering,
technology and
management**

Who we are

A specialist postgraduate university located at the heart of the UK, Cranfield's world-class expertise, large-scale facilities and unrivalled industry partnerships are creating leaders in technology and management globally.

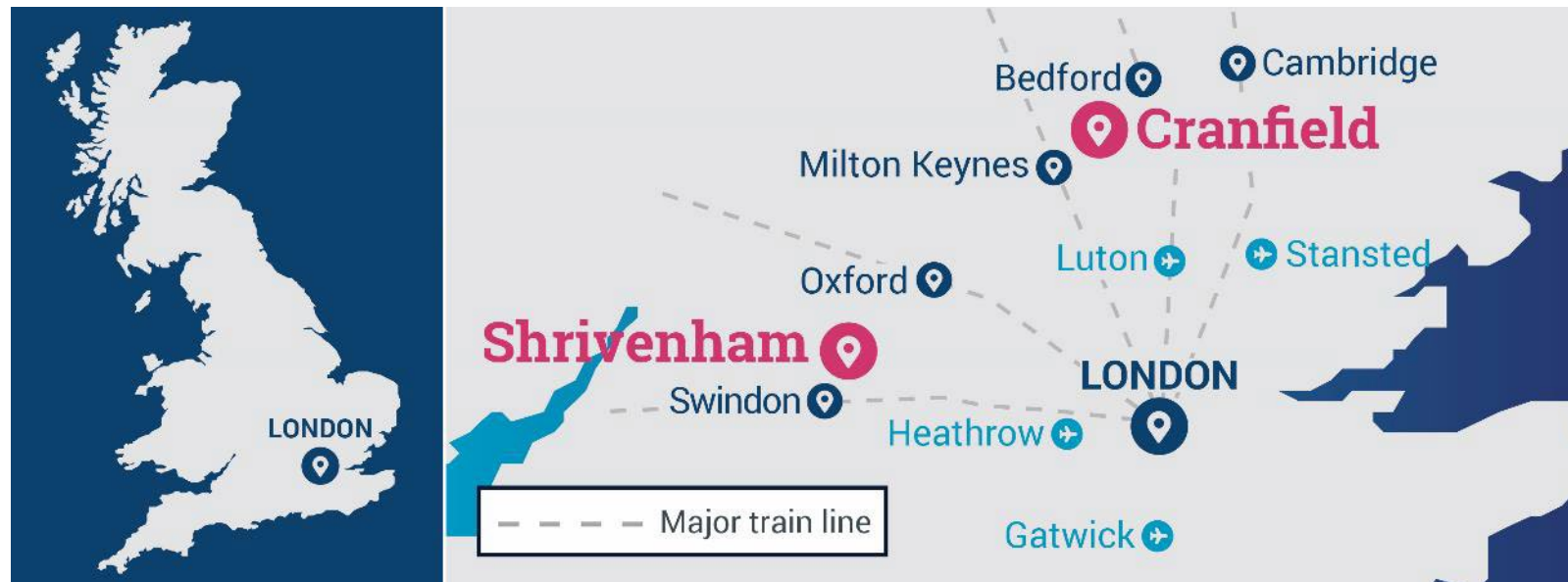
The research and consultancy we carry out for industry, government and business provides our students with a real-world learning environment, allowing them to develop as professionals and then transfer their knowledge to the global economy.

Strategically located in the UK

Cranfield University is located within the Oxford to Cambridge Arc (O2C), an initiative launched in 2003 to create an “arc” of innovation and entrepreneurial excellence.

It is also near to Silicone Fen, home to a large cluster of high-tech businesses focusing on software, electronics and biotechnology.

This makes Cranfield University well-located for study and research opportunities as well as future employment prospects.



Who we are



Aerospace at Cranfield



Transport Systems at Cranfield



We create leaders in technology and management

Our expertise is in our deep understanding of technology and management and how these work together to benefit the world.



Aerospace



Defence and Security



Energy and Power



Environment and Agrifood



Manufacturing



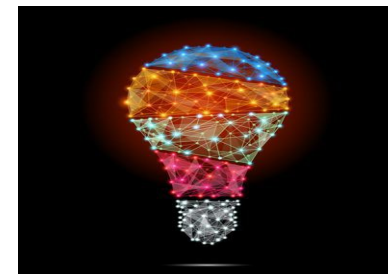
School of Management



Transport Systems



Water



Design Thinking

Key facts about Cranfield

81%
of our research
is classed as
world-leading or
**internationally
excellent**

Professional alumni
network of over
70,000
across
177 countries

Top 50
in the world
for Engineering –
**Mechanical, Aeronautical
& Manufacturing.**
QS World Rankings 2022

1:8
Teaching staff to
student ratio, one of
the best ratios for any
university in the UK

Mutually-beneficial
relationships
with around
1,500
**companies and
organisations**

**Six-time
winner**
of the prestigious
Queen's Anniversary
Prize

Cranfield School of
Management is one of
an elite group of schools
worldwide with
**triple
accreditation**

**£100
million**
of investment in new
facilities over the
past four years

At Cranfield you learn by doing

“Group projects are consultancy-style assignments sponsored by industry partners. They provide students with experience working on real problems for a real client, gaining essential technical and transferable skills, such team working, managing resources and developing reporting and presentation skills.”



advisory boards



Guest lectures



Webinars



Site visits



Group projects

Global reach

We have unrivalled industry partnerships. 1,500 companies across the world choose to work with us. Below are just a few of the organisations we work with.



Our facilities

Cranfield has many world-class, large scale and national facilities that enhance the quality and value of our research and teaching. Learn more about them in the individual theme slides.



Kings Norton library designed by Sir Norman Foster







nts Aircraft World Options Views Help Add-ons

12:02

ADDITIONAL INSTRUMENT CONTROLS

SAFARI



Campus life

Cranfield Students' Association (CSA)

The CSA is run by a team of elected students and supported by a small team of staff, supporting and representing Cranfield University students, promoting student welfare and organising social, cultural and sporting activities.

Throughout the year, the CSA organises regular entertainment including freshers' and graduation events, live bands, discos and the President's Ball. The CSA also organises trips to places of interest around the country, according to the demand from members.



Cranfield University
virtual experience



Social media

Find us on:



LinkedIn



Facebook



Twitter



YouTube



Instagram



Blog



Weibo



Wechat

Your application!

Test provider	Tests accepted	Minimum score requirements
IELTS*	IELTS Academic	6.5 overall and 5.5 in all skill components.
	IELTS Online	
	IELTS for UKVI Academic	
TOEFL	TOEFL iBT	92 total and minimum skill component scores of
	We accept all 3 test options:	18 reading, 17 listening, 20 speaking and
	TOEFL iBT test	17 writing.
	TOEFL iBT Home Edition	
	TOEFL iBT Paper Edition	
Pearson PTE	PTE Academic	65 overall and 59 in all skill components.
	PTE Academic Online	
	PTE Academic UKVI	
Cambridge	Any Cambridge Assessment English test	Cambridge English Scale score of 180 overall
Assessment	meeting the required scores can be accepted.	and 160 in all skill components.
English	The following are recommended as being	
	within the scale score range:	
	Cambridge C1 Advanced	
	Cambridge C2 Proficiency	
	Linguaskill General	

TOEIC is not an accepted test



Your application!

Selective process – offer letter within 4 to 12 weeks

All relevant information can be found on our website

<https://www.cranfield.ac.uk/study/application-guide>

Tuition Fees

EPP partner students are granted a **considerable discount** in the overseas tuition fees (50% or Home fees, whichever is higher).

Student Visa !

!! If you don't hold a British passport you will need to apply to a **student visa!!**

Important:

- Meet the conditions in your offer letter and get to Unconditional offer stage (deposit, language condition, etc) as soon as you can
- You can start your visa application 6 month before the start of your course

Costs:

- £363 application fee
- £705 per year - NHS (healthcare) surcharge

<https://www.gov.uk/student-visa>



Graduate Visa !

A Graduate visa gives you permission to stay in the UK for at least 2 years after successfully completing a course in the UK.

Criteria:

- You studied a UG or PG degree in UK on a Student Visa (tier 4)
- You have successfully completed the course
- You must be in the UK when you apply & apply before your student visa expires

Costs:

- £715 application fee
- £624 per year - NHS (healthcare) surcharge
- Graduate visas cannot be extended, can switch to another visa type

<https://www.gov.uk/graduate-visa>



Job opportunities!

Outstanding Careers and Employability Service

